

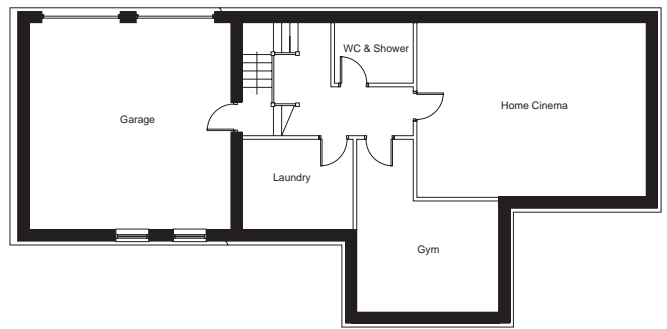


The Scotsdale

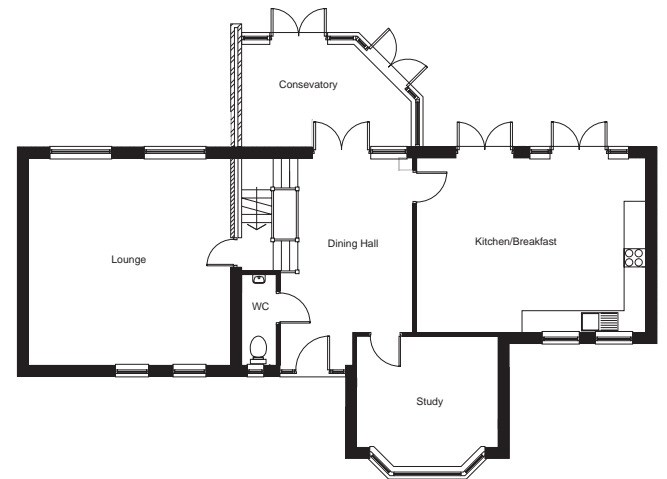
An executive 5 bedroom detached home



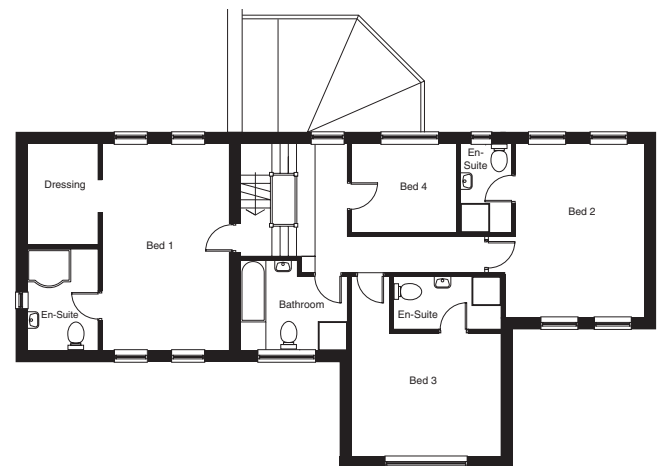
Basement	Metric	Imperial
Home Cinema	6290 x 4790	20'7" x 15'9"
Gym	3890 x 3050	12'9" x 10'0"
Laundry	3050 x 2490	10'0" x 8'2"
WC/Shower	2200 x 1660	7'3" x 5'5"
Garage	5650 x 5550	18'7" x 18'3"



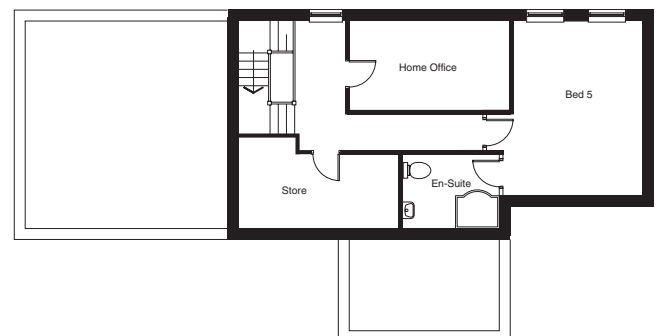
Ground Floor	Metric	Imperial
Lounge	5690 x 5550	18'7" x 18'3"
Dining Hall	4800 x 3650	15'9" x 12'0"
Breakfast/Kitchen	6290 x 4790	20'7" x 15'9"
Study	3900 x 3500max	12'9" x 11'6" max
WC	2500 x 1000	8'3" x 3'3"
Conservatory	4600 x 2800max	15'1" x 9'2" max



First Floor	Metric	Imperial
Bedroom 1	5650 x 3500	18'6" x 11'6"
Dressing	2800 x 1950	9'2" x 6'4"
En-Suite	2750 x 1950	9'0" x 6'4"
Bedroom 2	4790 x 3553	15'2" x 11'8"
En-Suite	2450 x 1400	8'0" x 4'7"
Bedroom 3	4100 x 3405	13'6" x 11'2"
En-Suite	2900 x 1450	9'6" x 4'9"
Bedroom 4	2900 x 2450	9'6" x 8'0"
Bathroom	2900 x 2400	9'6" x 7'10"



Second Floor	Metric	Imperial
Bedroom 5	4790 x 3553	15'9" x 11'8"
En-Suite	2650 x 2040	8'8" x 6'8"
Office	4400 x 2450	14'5" x 8'0"
Store	4398 x 2050	14'5" x 6'9"



The Scotsdale

An executive 5 bedroom detached home